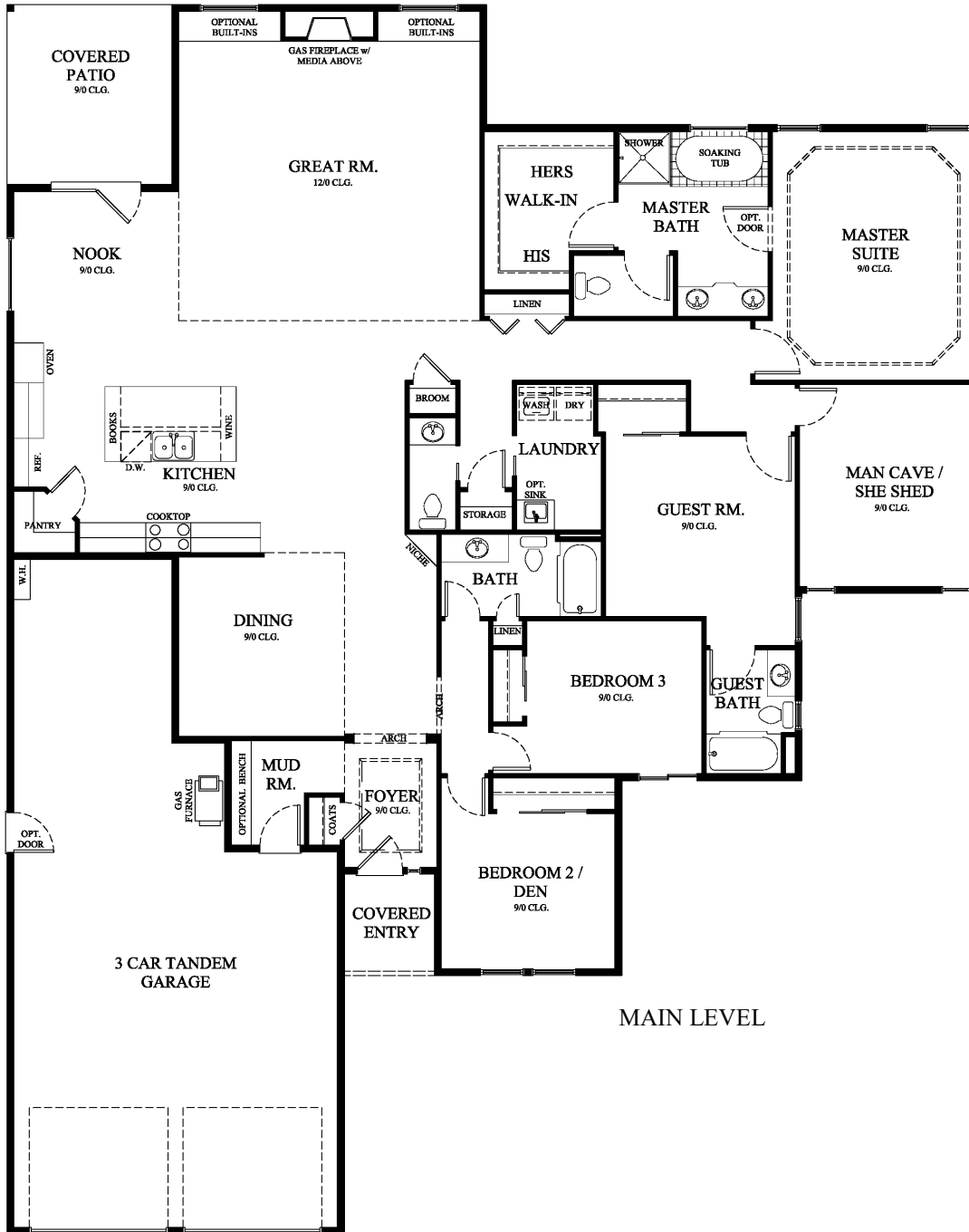
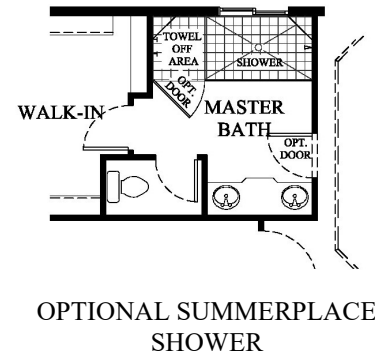


# Taverner Ridge

## CLASSIC COLLECTION



MAIN LEVEL



## GRANVIEW II

Base Square Footage = 2902

**SUMMERPLACE  
HOMES, INC.**

*Building a Climate of Excellence*

WA LIC# SUMMEH1050N5

All square footages are approximate. Plans, prices and specifications are subject to change without notice. This plan is copyrighted and may not be reproduced without permission. Actual patio position may vary based on site conditions.

# Taverner Ridge

## CLASSIC COLLECTION

This exciting new ranch plan offers all of the features that today's homeowner is looking for. At the heart of the home is the massive great room featuring a towering stone fireplace and 12' ceilings. The fully appointed open island gourmet kitchen is connected to both the formal dining room and the bright.....



CRAFTSMAN



NORTHWEST TRADITIONAL

.....informal breakfast nook. A large functional mudroom connects the three car tandem garage to the interior of the home. The private master suite offers all of the features and luxury that you've come to expect.

This plan also offers a spacious guest room complete with a full bath. Two additional bedrooms and a roomy den add to this plan's flexibility.



NORTHWEST TRADITIONAL

## GRANVIEW II

NORTHWEST



PARTNER

SUMMERPLACE  
HOMES, INC.  
Building a Climate of Excellence

In the spirit of continuous improvement, we reserve the right to make changes to plans, specifications and pricing without notice. Variations in interior and exterior configurations may occur because of normal design criteria and changing building codes. All square footages and room dimensions are approximate only. All illustrations, floor plans and maps are artist's conceptions only and are not intended to be exact depictions of actual site conditions.